

**Authorization for PCA Services
DHS 10/2009**

STEP 1 - Access To PCA Services
A person must have:

- At least one dependency in an ADL

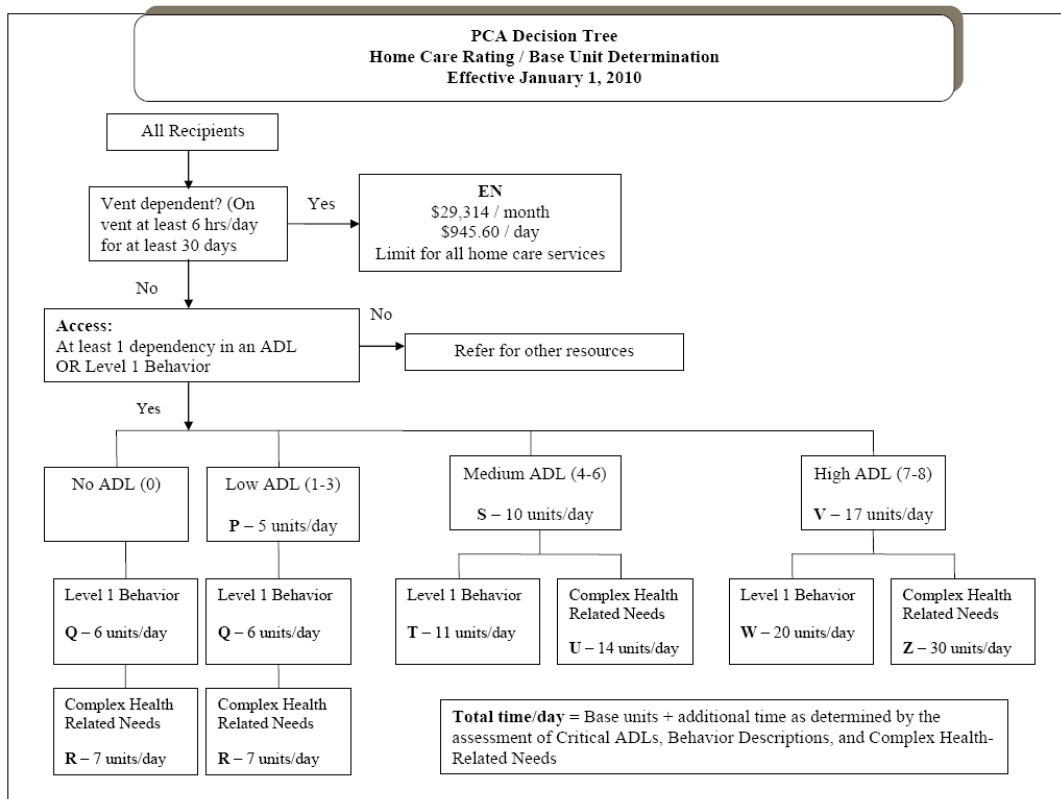
And/or

- Level I behavior as defined

STEP 2 - Home Care Rating and Base Unit Determination			
# Dependencies in ADLs	Level I Behavior (Meet Definition)	Complex Health Needs	Home Care Rating Base Units-Minutes
1-3	----	----	P = 5 u – 75 m
0	Yes	----	Q = 6 u – 90 m
1-3	Yes	----	Q = 6 u – 90 m
1-3	Yes or No	Yes	R = 7 u - 105 m
0	Yes	Yes	R = 7 u - 105 m
4-6	----	----	S = 10 u – 150 m
4-6	Yes	----	T = 11 u – 165 m
4-6	Yes or No	Yes	U = 14 u – 210 m
7-8	----	----	V = 17 u - 255 m
7-8	Yes	----	W =20 u – 300 m
7-8	Yes or No	Yes	Z = 30 u – 450 m
Vent Dependent			EN - \$29,314/month

STEP 3 – Determination of Additional Time
If the assessment shows a person has one or more of the following descriptions, an additional 2 units or 30 minutes per day is added to the base units-minutes for each of the following:

Critical ADLs	Behaviors (4 times/week)	Complex Health
Eating	Increased vulnerability due to cognitive deficits or socially inappropriate behavior	Tube Feeding
Transferring	Resistive to care, verbally aggressive	Parenteral/IV Therapy
Mobility	Physical aggression towards self, others, or destruction of property	Wounds
Toileting		Respiratory Interventions Catheter
		Bowel Program Neurological Intervention
		Other Congenital or Acquired Diseases
Potential Maximum Total 8 units-120 minutes	Potential Maximum Total 6 units-90 minutes	Potential Maximum Total 16 units-240 minutes



One Unit=15 minutes

BASE UNITS (amt of time) FOR EACH HOME CARE RATING

P = 1hr, 15 minutes

Q= 1 and ½ hours

R= 1 and ¾ hours

S= 2 and ½ hours

T= 2 and ¾ hours

U=3 and ½ hours

V=4 and ¼ hours

W=5 hours

Z=7 and ½ hours